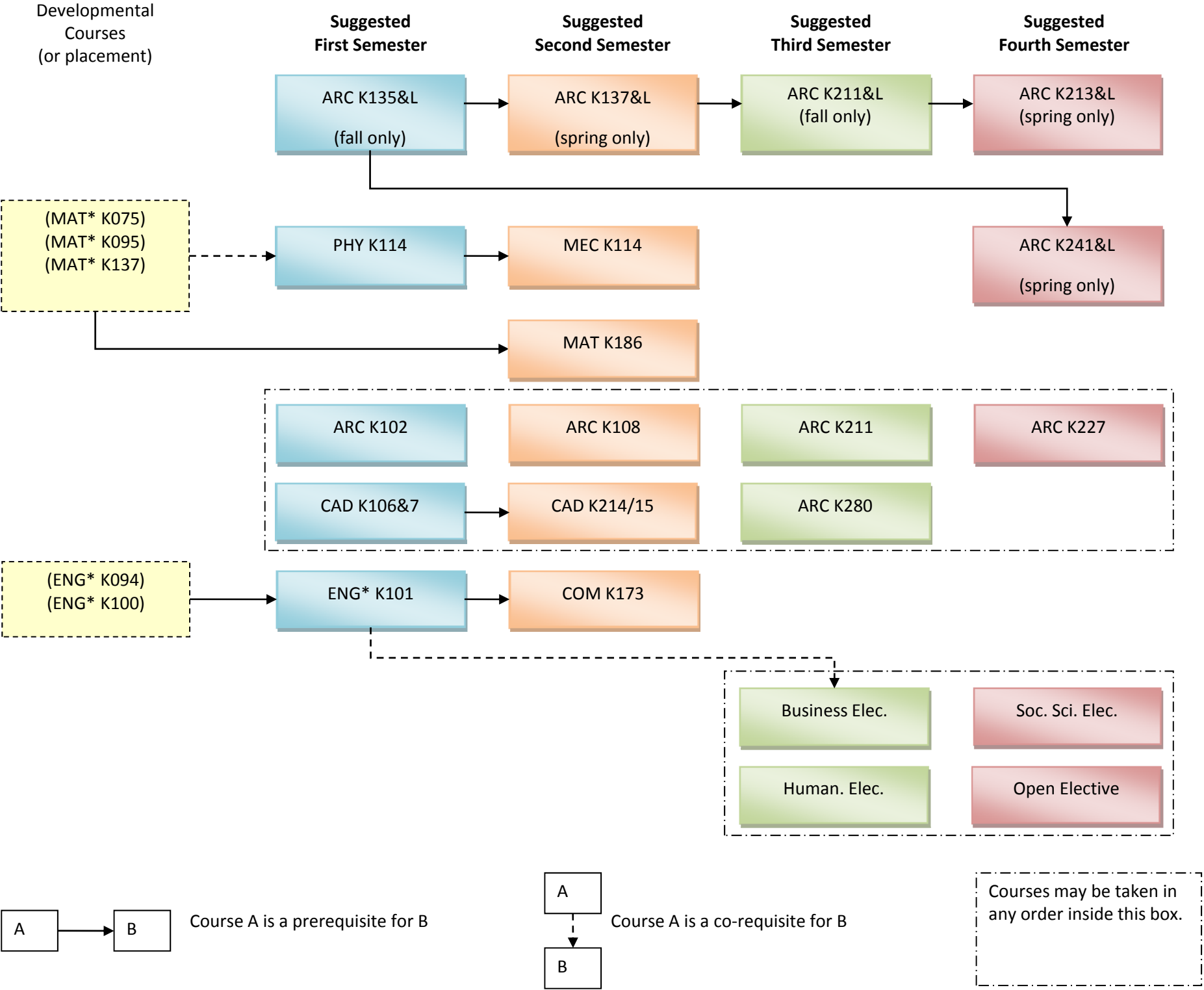


Architectural Design Technology Curriculum Flow Chart



1st Year

Semester I

ARC K102	Architecture of the World
CAD 106/7	AutoCADT & Lab
ARC K135/L	Construction Graphics
ENG K101	College Composition
PHY K114	Mechanics

Semester II

ARC K137/L	Architectural Detailing
CAD K214/15	Constr. CAD (RevitT)
ARC K108	Building Materials
COM K173	Public Speaking
MAT K186	Pre-calculus
MEC K114	Statics

2nd Year

Semester III

(See POS)	Business Elective
ARC K211/L	Architectural Design I
ARC K221	Contracts & Specifications
ARC K280	Trends & Issues (Topics)
ELEC	Humanities & Arts

Semester IV

ARC K213/L	Architectural Design II
ARC K241/L	Site Analysis & Lab
ARC K227	Building Codes-Ordinances
ELEC	Social Sciences
ELEC	Open Elective